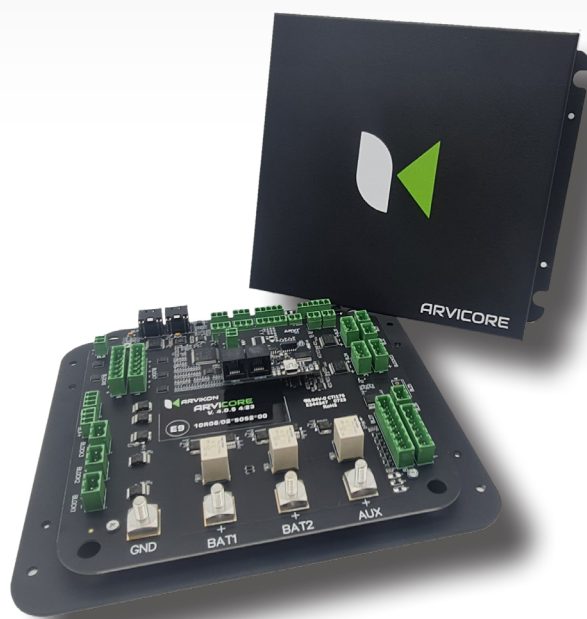


# ARVICORE DATASHEET



# TAKE CONTROL OF YOUR VEHICLE'S SYSTEMS WITH **ARVICORE**

**ARVICORE IS OUR NEXT GEN ELECTROBLOCK, AT THE CORE OF THE SMART CARAVANING™ CONTROL SYSTEM FOR RECREATIONAL VEHICLES AND MARINE**

**ARVICORE** electroblock, the all-in-one control unit for managing your vehicle's essential systems with ease. From heating and air conditioning to water levels, energy consumption, and more, the **ARVICORE** lets you monitor and manage it all from one central location. You can even operate auxiliary devices and set advanced electronic fuses for added protection. With wireless control via the Smart Caravaning App and compatibility with a range of vehicles, the **ARVICORE** electroblock is the ultimate solution for efficient and convenient vehicle management.

## THE **FUTURE** OF SMART CONTROL FOR RECREATIONAL VEHICLES

### **HVAC MANAGEMENT**



Manage vehicles heating, ventilation, and air conditioning equipment/systems with ease.

### **WATER SYSTEM MANAGEMENT**



Monitor and manage clean and gray water levels, boiler, water pumps and valves.

## **LIGHTS MANAGEMENT**



Manage a total of 6x vehicle dimmable lights, including 2x user-configurable lines.

## **ENERGY EFFECENCY CONTROL**



Monitor and manage vehicle's energy consumption, loads, voltage, battery SOC/SOH, cell temperature and more.

## **AUXILIARY EQUIPMENT MANAGEMENT**



Operate lift-up beds, elevating roofs, awnings, solar panels, chargers, inverter and other aux devices.

## **ELECTRONIC FUSES**



Programmable and resettable electronic fuses for advanced protection.

## **CONNECTIVITY**



CAN, ARVIBUS, SERIAL & LIN/CI-BUS network interfaces, and NMEA2000, MODBUS/TCPIP, RV-C (under preparation).

## **SMART & REMOTE CONTROL**



Leverage the use of AI-powered Smart Modes™ for maximum efficiency. Control the entire system wirelessly via Smart Caravaning™ App.

## **WARNINGS & NOTIFICATIONS**



Manage malfunctioning equipment and track system alerts using a comprehensive archive of past records.

**ARVICORE**

# SMART CARAVANING™

## ARVICORE - INPUTS & OUTPUTS

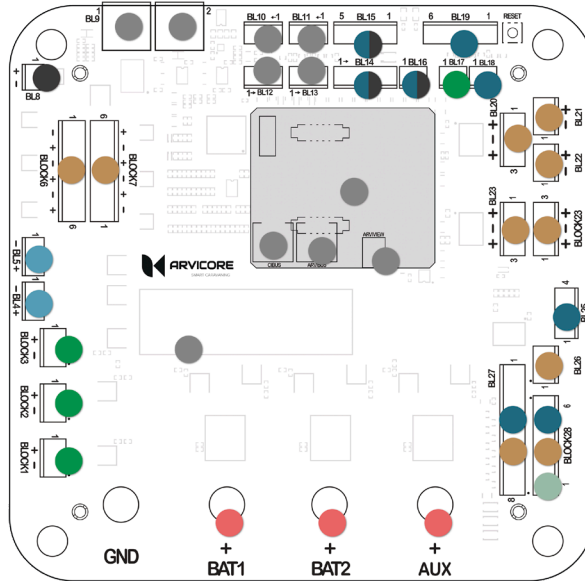
**3 HIGH POWER 40A**  
OUTPUTS

**3 HIGH POWER 40A**  
INPUTS

**2 MID POWER 30A**  
INPUTS

**1 MID POWER 30A**  
OUTPUTS

**1 POTENTIOMETER**



**2**  
LINBUS/  
CIBUS

**2**  
ONEWIRE

**IR**  
CONTROLLER

**2**  
CANBUS

SERIAL  
COM

**13 POWER 20A**  
OUTPUTS

**4 LOW POWER 2A**  
OUTPUTS

**19 SIGNAL 0.5A**  
INPUTS

**5 SIGNAL 2A**  
OUTPUTS

**2 SIGNAL**  
4-20A / 0-10 OHM  
INPUTS

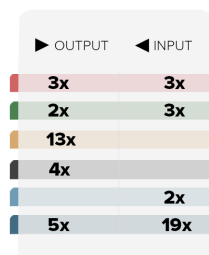
### ARVIKON'S NEXT GEN ELECTROBLOCK

We believe in designing and pre-programming inputs and outputs for particular RV functions and uses, enabling a seamless plug-and-play installation.

[WWW.ARVIKON.COM](http://WWW.ARVIKON.COM)



## ARVICORE - CONNECTORS



HIGH POWER (40A)\*  
MID POWER (30A)  
POWER (20A)  
LOW POWER 2A OUTPUT  
SIGNAL 4-20A /0-10 OHM  
SIGNAL OUTPUT (2A)/ INPUT (0.5A)

2x LINBUS/CIBUS  
1x SERIAL COM  
2x ONEWIRE  
1x IR CONTROLLER  
2x CANBUS  
1x POTENTIOMETER

OUTPUTS: 38  
INPUTS: 25

**TOTAL: 63**

### 09 CANBUS 1 AND 2

2x CANBUS

### 10 TEMPERATURE PROBE 1

ONEWIRE

### 11 TEMPERATURE PROBE 2

ONEWIRE

### 12 TEMPERATURE PROBE 3

ONEWIRE

### 13 INFRARED

IR CONTROLLER

### 14 GREY WATER PROBE

2A ► 4x 0.5A ◀

### 15 CLEAN WATER PROBE

2A ► 4x 0.5A ◀

### 16 BLACK WATER PROBE (OR OTHER)

2A ► 0.5A ◀

### 17 12V BATTERY ENGINE

30A ► ◀

### 18 RESERVED FOR FUTURE USE

2x 0.5A ◀

### 19 LIGHT SWITCH 1 - 6

6x 0.5A ◀

### RE RESET BUTTON

### 08 FAN POWER SUPPLY

2A ►

### 07 LIGHTS 4 - 6

20A ►

### 06 LIGHTS 1 - 3

20A ►

### 05 GREY WATERS

4-20A /0-10 OHM

### 04 FRESH WATER

4-20A /0-10 OHM

### 03 INVERTER

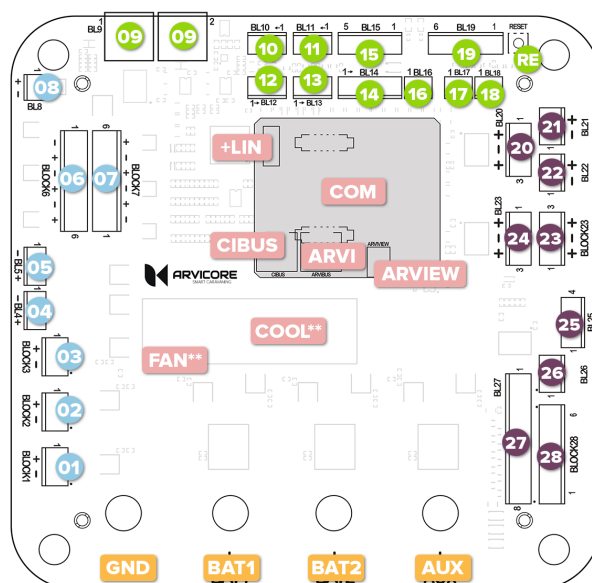
30A ◀

### 02 CHARGER

30A ◀

### 01 SOLAR PANEL

30A ◀



### 20 FUEL SYSTEM OR UNIVERSAL ENGINE

2x 20A ►

### 21 DRAIN VALVE

20A ►

### 22 WATER PUMP

20A ►

### 23 EMPTYING VALVE

20A ►

### 24 12V CONTINUOUS OR ELEVATING BED OR SIMILAR

2x 20A ►

### 25 RESERVED FOR FUTURE USE

2A ◀

### 26 FRIDGE

20A ►

### 27 BOILER

20A ►

### 28 HEATING

POTE 20A ►

### GND TERMINAL GND - M8

### BAT1 BATTERY 1 (ENGINE, BOOSTER) - M8

40A ► ◀

### BAT2 BATTERY 2 (AUXILIARY) - M8

40A ► ◀

### AUX AUXILIARY TERMINAL - M8

40A ► ◀

### ARVIEW ARVIEW - SCREEN CONNECTION

SERIAL COM

### ARVI ARVIBUS

LINBUS/CIBUS

### CIBUS CIBUS - CIBUS/LINBUS EQUIPMENT CONNECTION\*

### COOL COOLER (OPTIONAL)\*\*

### FAN DISSIPATION FAN (OPTIONAL)\*\*

### COM ARVI XPAND CARD

### +LIN 12V LIN BUS

### EXAMPLES OF COMPATIBLE DEVICES:

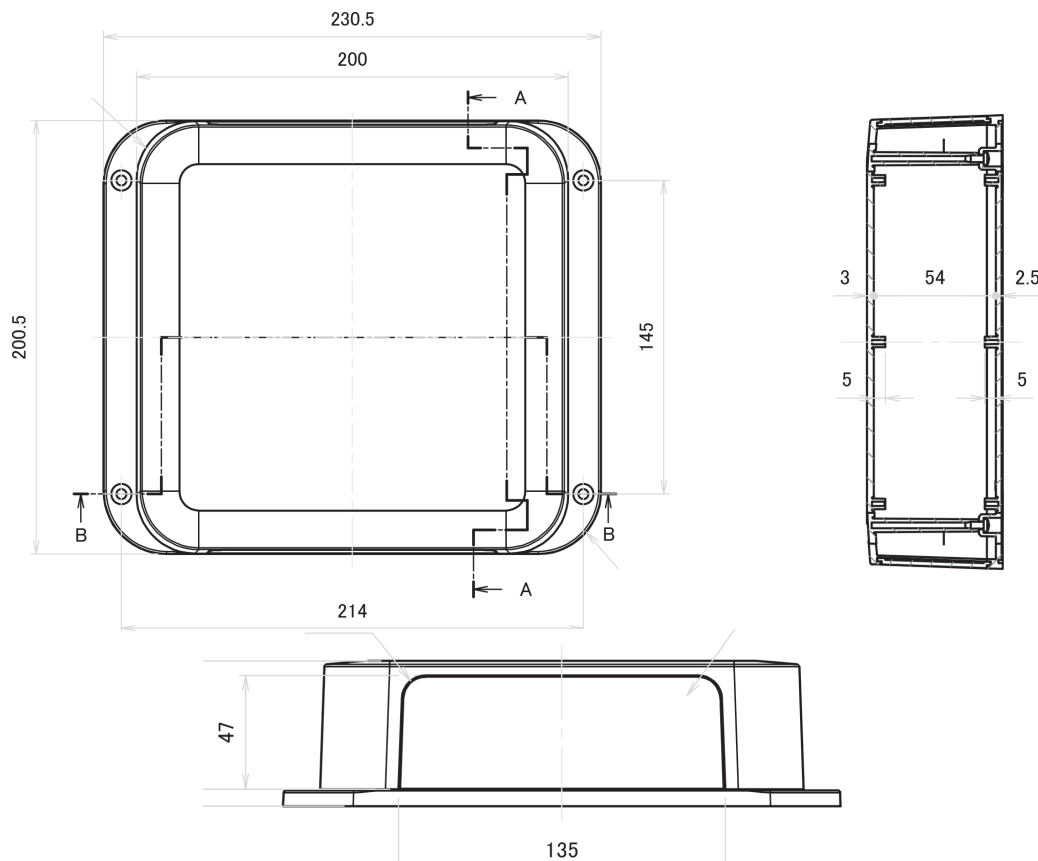
**Truma:** Combi 6E, 6, 4E, 4, D4, D4E, D6E, Aventa & Saphir AC Systems; **Eberspacher:** Altronic 3, Hydronic; **Dometic:** 10-Series Refrigerators, Freshjet & Freshlight AC Systems; **Thetford** T2000, N4000 Refrigerator series; **Thitronik:** WiiPro III Home Alarm, GasPro III Gas Alarm, ProFinder GPS & Fence module

\* Add XPAND ARVISHUNT to monitor and control high-current devices (>40A), including inverters, chargers, DC-DC boosters, and solar controllers.

\*\* OEM partners can request a Cooler and/or Dissipation Fan for vehicles exposed to extreme conditions

# SPECIFICATIONS

<b>Output Channels</b>	43 (3x50A, 10x30A, 20x1A)
<b>Motor Channels</b>	3 (30A)
<b>Tickets</b>	23 (18 signal, 2x30A, 3x50A)
<b>PWM</b>	6 (15A)
<b>Communication</b>	LIN/CI-BUS, CANBUS, ARVIBUS, SERIAL, IR, NMEA2000, MODBUS/TCPIP, RV-C (in development)
<b>Sensor Reading</b>	Voltage, Current, Temperature, Switch
<b>Protection</b>	Electronic (digital) fuses
<b>Stream</b>	Current reading at all outputs
<b>Voltage</b>	12V or 24V upon request
<b>Consumption</b>	<ul style="list-style-type: none"> <li>- At full power 650mA</li> <li>- With the display in SLEEP 330mA MAX</li> <li>- With the display OFF 110mA max</li> </ul>
<b>Certifications</b>	ECE-R10, ROHS
<b>Operating Temperature</b>	-20°C to +50°C
<b>Storage Temperature</b>	-20°C to +70°C
<b>Dimensions (W x H x D)</b>	230 X 205 X 70 mm
<b>Weight</b>	0.6 kg



# DISCOVER A WORLD OF CONNECTIVITY

COMPATIBLE WITH:  
+60 BRANDS +170 DEVICES (30 CIBUS)



## RELATED PRODUCTS:

ArviCore is part of the Smart Caravaning Control System.  
Please refer to other related products.



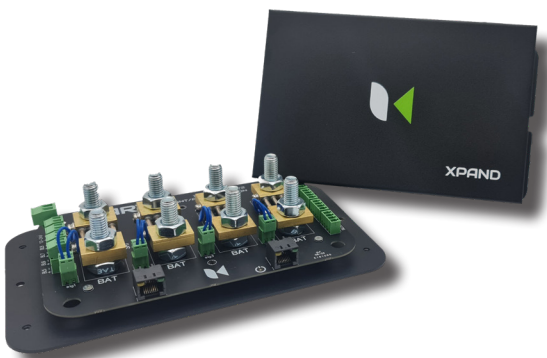
ARVIVIEW displays: Stunning visuals, reliable performance, and convenient access to your vehicle via the Smart Caravaning™ App.

**Arvview display Standard 7" 10" & 15"**



The ARVIVIEW OEM display is purpose-built for OEM partners, featuring a sleek design, superior performance, and customization options. With crystal-clear visuals, powerful processing, and seamless integration with ARVIKON's Smart Caravaning system, it provides the ultimate convenience and ease of use.

**Arvview display OEM 7" & OEM 10"**



XPAND ArviShunt is an expansion to the core Smart Caravaning (TM) Control Systems for RV and Marine. It connects to it's electroblock ArviCore to provide a solution when it is necessary to manage devices with currents above 30/40 A or 300 W.

**Xpand Arvishunt**







**ARVIKON**  
SMART CARAVANING™

**CIVD**  
Caravaning Industrie Verband e.V.  
**MEMBERS**



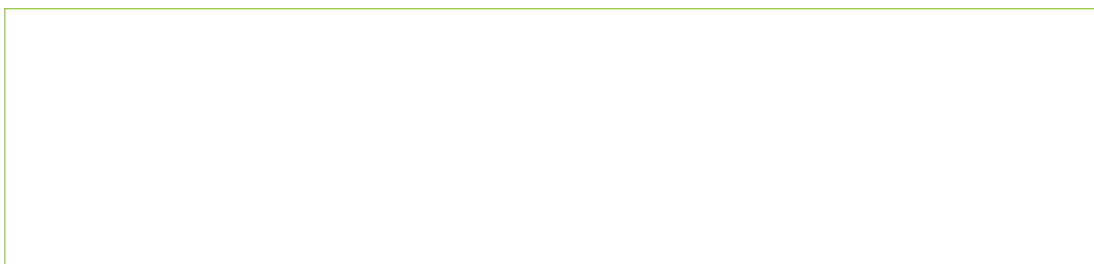
**Deutsches  
Patent- und Markenamt**

Die Präsidentin des Deutschen Patent- und Markenamts

*Samuela Roth-Schäfer*



**Oficina Española  
de Patentes y Marcas**



**WWW.ARVIKON.COM**