

BROCHURE 2023

**FINALLY A TRUE SMART AUTOMATION
FOR CARAVANING AND THE RV SECTOR**

A COMPLETE REVOLUTION!

SMART CARAVANING

A NEW WAY OF UNDERSTANDING CARAVANING

ALL-IN-ONE
UNIVERSAL
ALL BRANDS
ALL DEVICES
PLUG & PLAY
DESIGNED FOR RV
FULL HOME
AUTOMATION



ARVIKON

SMART CARAVANING



✉ hello@arvikon.com 🌐 arvikon.com 📷 [@arvikonsmartcaravaning](https://www.instagram.com/arvikonsmartcaravaning) 🔗 [in](https://www.linkedin.com/company/arvikon) [f](https://www.facebook.com/arvikon) [@arvikon](https://www.facebook.com/arvikon)
☎ +34 91 005 99 36 ARVIMARINE CONTROL SYSTEMS SL Avd/De las nieves, 21, 28935 Mostoles, Madrid. (SPAIN)

WHAT DOES THE **ARVIKON'S** **SMART** CARAVANING OFFER?



CI-BUS
ready

ARVI
NET

CM
SMART
MODES



CAN-BUS
ready



A.I.



#SMARTCARAVANING

A CONTROL PANEL AT THE FOREFRONT OF MODERN ELECTRONICS

SUPER COMPACT HIGH-TECH

- We have designed a hardware (ARVICORE) specifically having in mind the **new requirements of the RV sector**.
- Manufactured according to the highest **automotive standards**.
- By using **state-of-the-art components**, we have succeeded in creating a **reliable, robust equipment** with **unparalleled functionalities**.
- In addition, with the **new electronic fuses**, experience on the road in your vehicle has changed.



A 7", 10" AND 15" EMBEDDABLE CAPACITIVE TOUCH SCREEN

Unique characteristics of ARVIKON VIEW 4TH GEN screens:

- Designed to be **stylish** and **practical**.
- Perfectly **integrated** into any material thanks to the 3 available finishes (Black Brushed Aluminum, Brushed Aluminum and Beveled Piano Black).
- **10-point capacitive** touch panel.
- Stand **high temperatures**.
- Super **quiet** thanks to the "**fanless**" technology to make the stay in the vehicle more pleasant.
- IP65 front surface: the display is fully protected in any situation and is easy to clean.
- Brightness and volume adjustment.
- **Anti-Shock** technology for a long life.



YOUR ARVIKON LEISURE PRO

THANKS TO THE ARVIKON X-PAND SHUNT

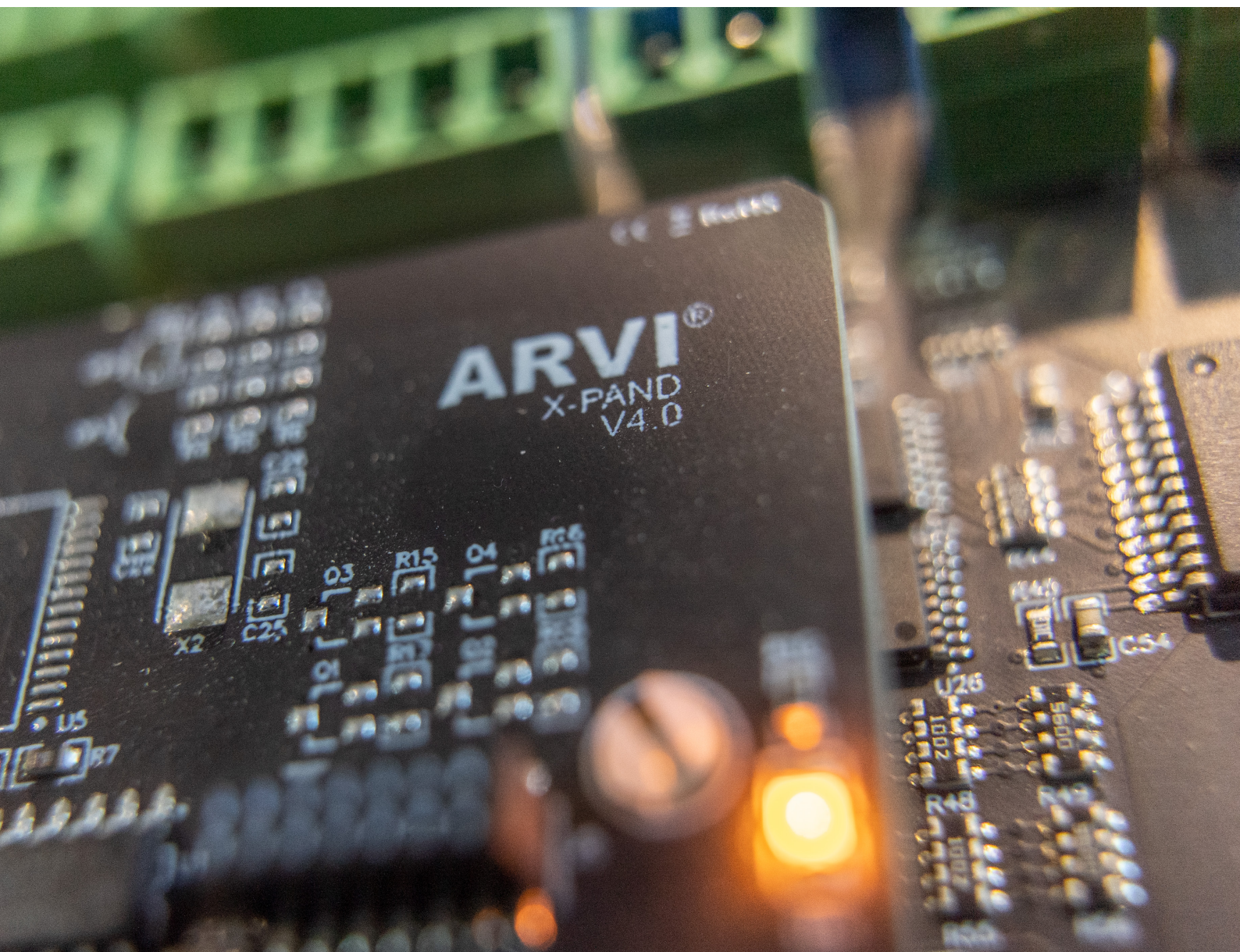
Control the 4 most important pieces of equipment of the vehicle with almost no limits.

- ▶ **POWER INVERTER:** Up to 400 amps and/or 4500W of power.
- ▶ **BATTERY CHARGER:** Up to 400 amps.
- ▶ **BOOSTER:** Up to 300 amps.
- ▶ **SOLAR REGULATOR:** Up to 300 amps.

All of them come with a signal or relay switch on, depending on the equipment.

Each current data is displayed independently: all the information at your fingertips!

ARVI
SHUNT

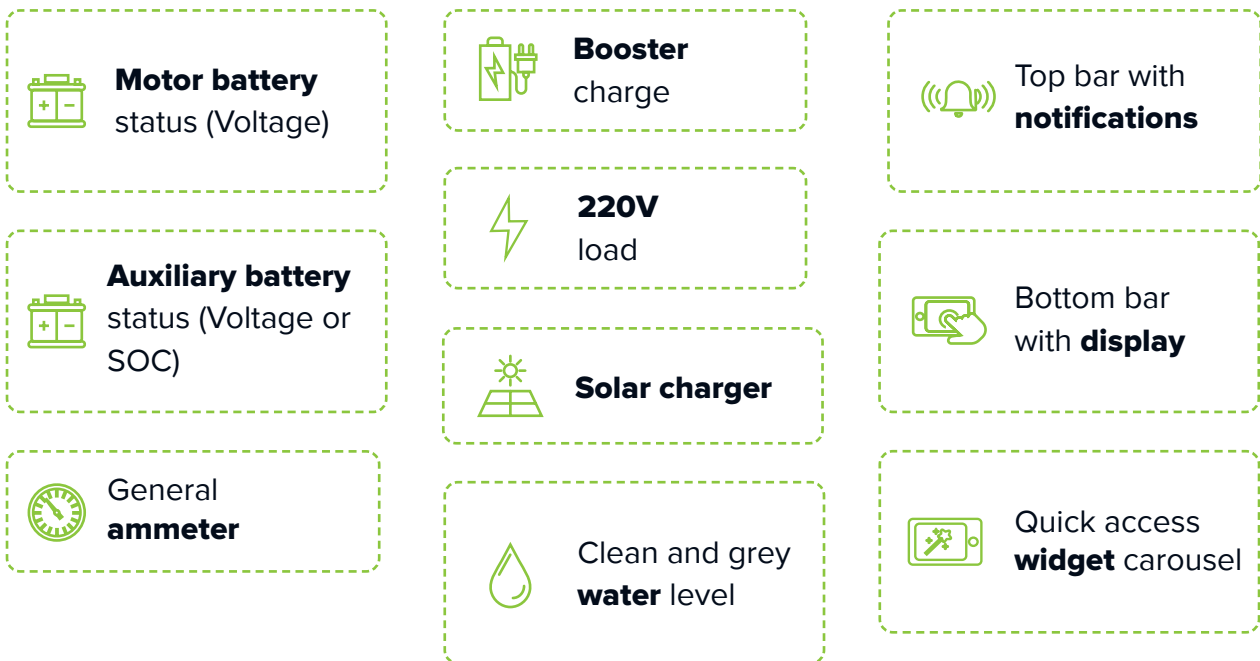




HOME

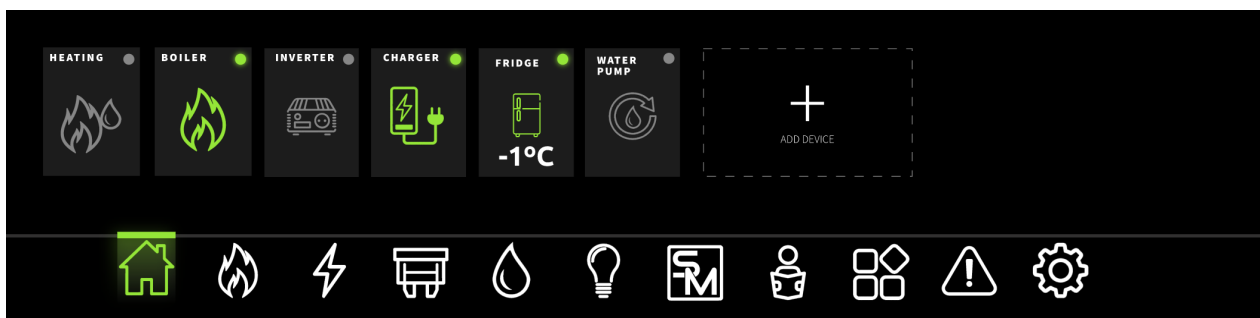
ALL THE ESSENTIALS AT A GLANCE

This is the main window. From here, we can see the most relevant data of the vehicle:



WIDGET CAROUSEL

WHAT YOU WANT TO SEE, **IN ONE CLICK**



- In the carousel, select from the menu any favorite equipment you want to have on hand. Scroll the carousel from left to right to see the added equipment: click to turn on or off.
- Each widget shows the real-time status of the equipment and its data: everything is under your control!



AIR CONDITIONING

INTERIOR TEMPERATURE CONTROL

On this screen, we have full control over the vehicle's interior climate.

► HEATING

- Turn the heater on or off.
- Adjust the temperature.
- Make use of the heater modes.*

► AIR CONDITIONING

- Turn the air conditioning on or off
- Make use of all modes of the air conditioner.*

► TEMPERATURE CONTROL

Set the desired temperature: the system itself turns the equipment on or off to maintain the selected temperature.

► FUEL CONTROL

To perform an active shutdown on the compatible safety devices installed on the vehicle, it is possible to cut the supply to the different vehicle systems (gas, diesel, etc.)

► TEMPERATURES

- Indoor temperature and outdoor temperature view.
- Digital probes included.



* Only in CIBUS compatible equipment. Consult the list of equipment.

ELECTRICITY



VEHICLE ENERGY CONTROL

On this screen, we have all the energy information of the vehicle.

► BATTERIES

These blocks provide the voltage or SOC* of the installed batteries, as well as their technology.

► TOTALIZING AMMETER

This block displays the resulting load and consumption count to see the real-time status of the system.

► INDEPENDENT AMMETERS

These blocks show the real-time charging of the alternator, 220V charger and solar panel. In addition, the last ammeter shows all the added consumptions of the system. With this data we obtain the totalizer data.

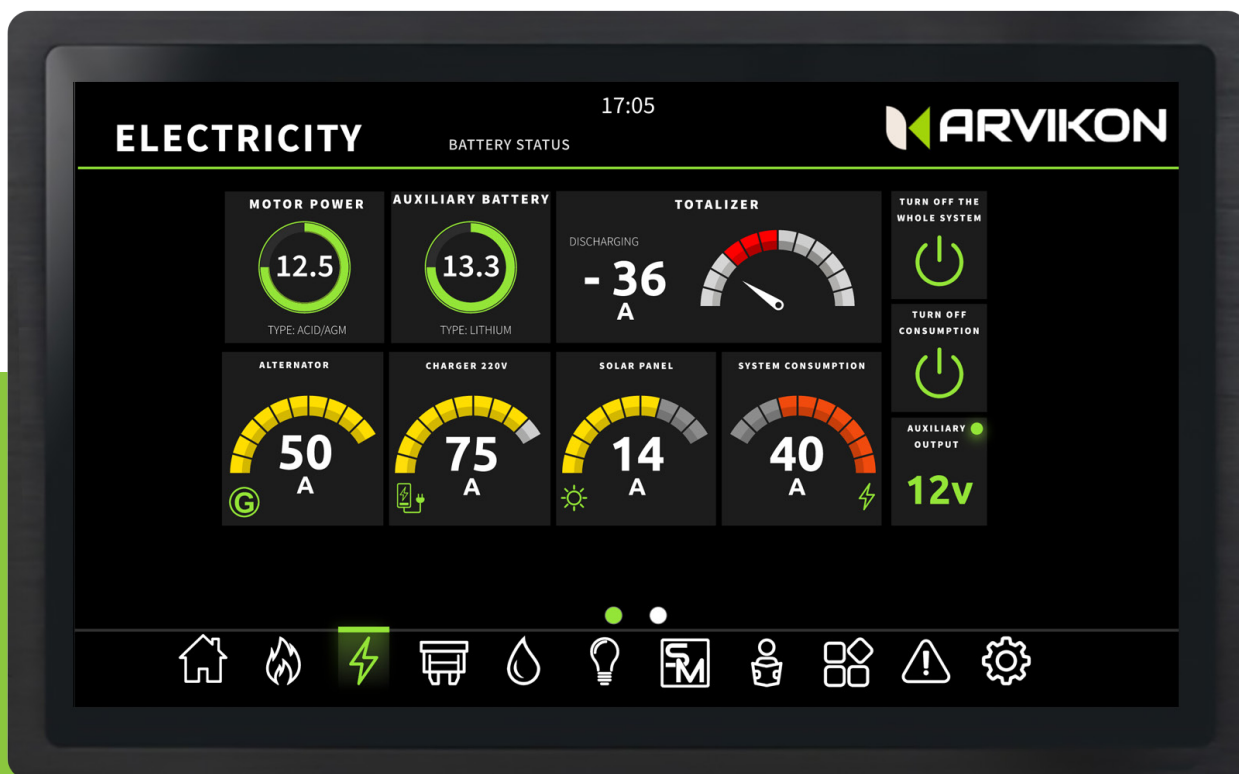
► CONSUMPTION CUT-OFF

These blocks can be used to cut consumption as follows:

- Cutting off consumption except for: Refrigerator, Heating, Air Conditioning and Boiler.
- Cutting off all consumption.
- Cutting of the AUX consumption output (12V, USB, etc.)

► EXTRA SCREENS

When installing any expansion of the ARVIKON® X-PAND range or with certain equipment installed, access to extra screens may appear that will display a lot of specific information such as: battery SOH, cycles, cell temperature, failures...



* Only on CIBUS and/or CANBUS compatible equipment. See list of equipment.



FUSES

PROGRAMMABLE AND RESETABLE ELECTRONIC FUSES. A UNIQUE SYSTEM IN THE MARKET. SAY GOODBYE TO THE PHYSICAL FUSES!

You can discard the old fuses, now they are digital.

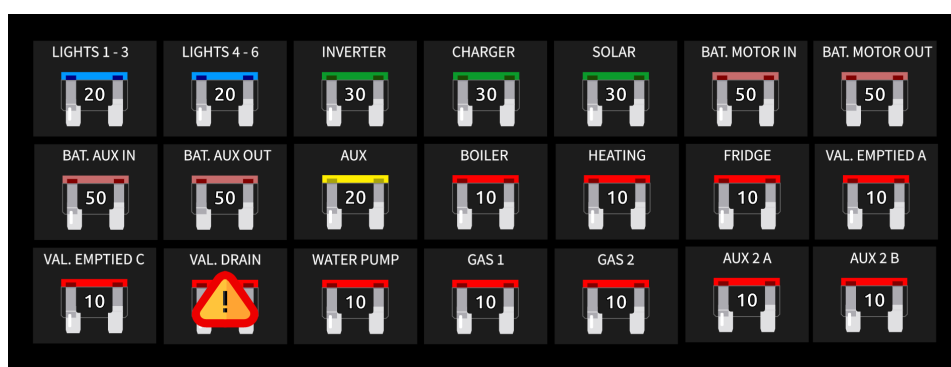
Extensive R&D work has enabled us to integrate high-tech fuses into our device. This allows the elimination of the annoying fuses and instead to have their information on our screen. We will be able to get at all times:

- ▶ **Status of each fuse**
- ▶ **Real-time current**
- ▶ **Fuse failure**
- ▶ **Power outage for each line**

AND MASSIVE INSTALL COST SAVINGS

TRIPPED FUSE WARNING WITH RESET

YOU WILL NEVER HAVE TO SEARCH FOR FUSES AGAIN



The system **warns** the user that the fuse has tripped.

It can be **reset** as many times as necessary **without any risk**: in the event of a recurring failure, the fuse trips again before it has even allowed current to pass through.

With just one touch, the system will guide the user to **reset** the fuse.

Malfunctions will be **recorded** for future checks or to facilitate the **assistance** of a technical service, after-sales service or dealer.

It saves time and simplifies both the diagnostics and the actions on the vehicle.

Through the **remote access** and upon request and authorization of the vehicle owner, a **service technician** can access the system to verify the failure and perform minor actions in order to save the situation or diagnose a malfunction remotely.

WATER

CONTROL OF THE WATER SYSTEM THROUGHOUT ITS CYCLE

On this screen, we have control over the entire water cycle.

► WATER LEVELS:

These blocks show the levels of clean and grey water, both have an alarm to warn of critical levels.

In the case of the clean water level, both analog and digital probes can be used to mark by steps or 1% by 1%.

► WATER PUMP:

This block allows to operate any pump on the market.



► VALVES:

These blocks act on the electric drain and drainage valves. In addition, the drain valve acts as a “Frost Control”.

► BOILER:

This block allows you to manage the water heater as well as its operating modes, fuels, etc.**

OUR A.I. WILL HELP YOU 24/7

Arvikon is equipped with a software that monitors your vehicle 24/7, and if you give it permission, it will act on your behalf to protect you against any unforeseen event. However, it has some rules that it will always comply with to ensure the integrity of the system, which are:

- Water pump shutdown due to low clean water level.
- Water pump shutdown due to high grey water level.
- Water pump shutdown and boiler shutdown due to low temperatures.
- Opening and subsequent closing of drain valve (Frost Control) for pressure relief at low temperature.
- And many more...

But be aware that the user will ALWAYS have full control and will be able to undo any of these actions, all of which will be reflected in the history of warnings, alarms and failures. In addition, if you want more ARVIKON® functionalities, make use of the SMART MODES and you will be surprised with what it can do for you.

The water probes included in the equipment are by sections, consult the manual for compatible digital probes.
** Only in CIBUS compatible equipment. Consult the list of equipment

LIGHTS

ALL VEHICLE LIGHTS ON A SINGLE DISPLAY

On this screen we have the 6 available light lines, we also have a general on/off and two user-configurable scenarios.

► DIMMER

All lights are dimmable, if not preferred, this condition can be modified in “settings”.

► SOFT ON/SOFT OFF

The 6 lines have soft start and soft shut-off to give a conciliatory effect.

► SCENARIOS

A long press can be used to save the currently configured scenario. Afterwards, the entire lighting system is reset to the previously saved settings with a single keystroke.

► CUSTOMIZATION

Icons and names are customizable in the “settings” menu.



SMART MODES

TECHNOLOGY COMES INTO ACTION

We have programmed an “Artificial Intelligence” system that can anticipate certain events if you have given it permission to do so. How? By activating the Smart Modes. The system will be in charge of monitoring the environment and trying to keep everything under control, as well as warn about the events that have occurred at all times.



SOME DESCRIPTIONS

► ECO FRIENDLY

This mode will do everything possible to ensure that the vehicle uses only solar and battery energy, and if the consumption is excessively high, it will warn you with a message and deactivate all functions if they cannot be carried out.

► FROST CONTROL

This mode allows the system to make use of the boiler, water pump and valves to keep the installation protected during the winter.

► FROST CONTROL + TEMPERATURE

This mode is identical to the previous one except that you are also granted permissions to act on the temperature control.

► PIPE CLEANING

This mode will perform a complete cleaning of the vehicle's water system for you. Just prepare the vehicle as indicated in “+ INFO” and the system takes care of everything.

► HEATING CLEANING

Thanks to its hour meter, the system will remind you when it is necessary to perform a cleaning cycle of the heater and if you give it permission, it will take care of it.

► NIGHT MODE

By activating this mode, the system will turn off all equipment considered annoying and/or noisy during the night and will program a lights off so that you can go to bed peacefully.

MANUALS



ALL WITHIN REACH OF A TAP

Thanks to our database, the equipment will have access to all the user manuals of the equipment installed on board. You can zoom, move around the file etc.

They are available in all languages.



ACCESSORIES

EVERYTHING UNDER CONTROL

In this window are the accessories installed on the vehicle, here are some examples:



Fridge

with on, off, temperature setting and operating mode. *



Inverter



Lift-up bed



Charger



Solar Panel



Elevating roof

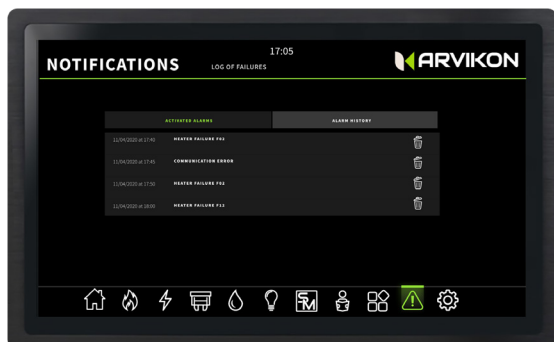


*Only in CIBUS compatible equipment. Consult the list of equipment.

WARNINGS, ALARMS AND MALFUNCTIONS



DON'T MISS A THING



- The system displays a complete listing of all events occurring in the vehicle, including warnings, alarms and malfunctions.
- In addition, it stores a time-stamped history of events to facilitate the diagnosis of more complex failures.

- For devices with available CIBUS, the exact malfunctions of the device will be reflected here.
- When a failure occurs, a POP UP message is displayed on the screen indicating the malfunction, possible cause and solution.

MULTIMEDIA AND APP LAUNCHER

MORE THAN HOME AUTOMATION

Besides home automation, ARVikon makes the most of its system and display by providing:

- A multimedia center: radio, music streaming, video...
- A customized launcher with useful sector-related APPs: Caramaps, BeVanLifer, etc.

The possibilities for customization, integration and adding value are endless. Just imagine and ask us!





**ARVINET IS THE NEW WAY TO
COMMUNICATE WITH YOUR VEHICLE FROM
ANYWHERE IN THE WORLD**



DOWNLOAD THE APP, SCAN YOUR VEHICLE AND ENJOY.

You can download the APP from the Google Play Store, or you can download the progressive APP for iOS and PC and just enter ARVINET in the settings window, scan the QR code of the vehicle or manually enter the data and you can manage your vehicle from wherever you want. *



ENCRYPTION
CRYPTOCURRENCY

In addition, thanks to our encrypted connection with point-to-point encryption, no one, not even ARVIKON®, can access your vehicle without your consent.

* REQUIRES 3G, 4G OR WIFI NETWORK CONNECTION

** ARVIKON® IS NOT RESPONSIBLE FOR THE OWNERSHIP OF THE PASSWORDS BY THE USER.

YOU CAN ALSO OPERATE YOUR VEHICLE FROM OTHER DEVICES

ANDROID DASHBOARD RADIO

Thanks to our agreement with DYNAVIN® SPAIN, we can serve radios 100% compatible with our system. However, any Android radio on the market with 3G, 4G or wifi network access should be able to operate ARVIKON® APP.



GARMIN OVERLANDER GPS

The GARMIN® Overlander GPS navigator is a great adventure companion, but it can be even more so thanks to the ARVIKON® compatibility.

EVEN ON SMARTWATCHES

We have a BETA version on the smartwatch platform. It is not yet available on the market, but will soon be integrated.





ARVIKON
SMART CARAVANING

16

CIVD
Caravaning Industrie Verband e.V.
MEMBERS



Deutsches
Patent- und Markenamt

Die Präsidentin des Deutschen Patent- und Markenamts

Tomelja R. Rösch-Schäfer



e
emisa



Oficina Española
de Patentes y Marcas